



New
Products
Inside

Funeral Supply

Volume 4



800-535-8667

www.cherokeespecialtycaskets.com

Inside You Will Find.....



SILITECH TECHNOLOGY.....	Pages 3-4
ARTERIAL FLUIDS.....	Pages 5-8
CAVITY FLUIDS.....	Pages 9-10
PRE & CO-INJECTION FLUIDS.....	Pages 11-14
SUPPLEMENTALS.....	Pages 15-21
PREP ROOM SUPPLIES.....	Pages 22-24
COSMETICS.....	Page 25
INSTRUMENTS.....	Pages 26-27
PROTECTIVE COVERS.....	Pages 28-29
PLASTIC GARMENTS.....	Page 30
GLOVES.....	Pages 31-33
BODY BAGS.....	Page 34
I.D. TAGS.....	Page 35
AIR TRAYS & BODY TRANSFER CASES.....	Page 36
VAULTS & LINERS.....	Page 37
REGISTER BOOKS & ACCESSORIES.....	Pages 38-43
FLAG CASES.....	Page 44
HEARSE MAGNETS.....	Pages 45-46
FUNERAL HOME EQUIPMENT.....	Pages 47-54
CHEROKEE SERVICES.....	Page 55
COMPANY POLICIES.....	Back Cover

SILITECH

FRIGID SILICONE TECHNOLOGY

SILITECH

Silicone lubricates the arterial system to help distribute formaldehyde deeply into the capillaries, thus promoting:

- Deeper Diffusion
- Wider Profusion
- Enhanced Saturation
- Superior Periphery Preservation

THE BENEFITS OF SILICONE

Silicone is extremely stable

- Able to withstand extremes of heat and cold.
- Acts as an insulator to protect the formaldehyde and other chemicals within the embalming solutions.
- Unaffected by aldehydes, alcohol, lanolin and other embalming chemicals.

Silicone is very non-reactive

- Does not dehydrate
- Colored dye remains stable in the presence of silicone.

NON-HAZARDOUS MATERIAL FORMULATIONS

Frigid Fluid Co. arterial and cavity fluids are classified as nonhazardous materials under current US specifications. These fluids can be shipped by common carrier under the classification ORM-D. This reduces freight costs and does not require the imposition of a hazmat fee by the freight company.

PHENOL-FREE FLUIDS

Frigid Fluid Co. embalming products are totally free of phenol. Phenol is a hazmat classified chemical that is highly toxic and known to cause lung irritation.

LIMITED HAZMAT PRODUCTS

Only these supplemental products are classified as hazardous:

- STOP - contains ethylene dichloride.
- Safe (25 lb. container) - contains paraformaldehyde.
- Paulex Powder (only applies to 25 lb. size) - contains paraformaldehyde.
- Feature Builder (only applies to 1 gallon size) - due to methanol quantity in package size.

Silicone Based Arterial Fluid

Frigid Fluid's "Silicone Technology" enhances the results you can attain with arterial fluids. The Silicone Advantage is delivered through a family of four arterial fluids.



36 PLUS (33 INDEX)

36 PLUS (24/case)

\$108.00/case

Our Best Selling Fluid.

36 PLUS assures preservation and pleasing results with both normal and difficult cases. It is particularly effective on frozen, decomposed and other challenging cases.

The formulation combines:

- The lubricating, diffusing and penetrating advantages of Silicone.
- The addition of "Frigid Stop" to prevent the causes of tissue gas.
- A water conditioner to neutralize calcium ions and soften hard water.
- A drainage enhancer.

Resulting in a body that:

- Retains moisture and color for a very natural appearance.
- Is free of tissue burn and "pruning"

Note: 36 PLUS is not recommended for a prep room attached to a septic system for which we recommend lanolin-based Tissue Guard 32.

SILITECH
FRIGID SILICONE TECHNOLOGY

Arterial Fluids

SILICONE BASED ARTERIAL FLUIDS



PERFECT TONE (18 index)

(24/case)

\$98.00/case

A lower index fluid that offers:

- The distribution advantages of silicone.
- The softening effect of lanolin.
- A pliable, smooth, life-like appearance.
- A medium firm texture.
- No dehydration risk



NATURAL TONE (20 index)

(24/case)

\$98.00/case

Silicone Technology combined with:

- Mild but very effective buffers.
- The addition of humectants.
- Resulting in a cosmetic effect that furnishes a uniform, life-like texture and color to the skin with a natural feel that is soft and smooth.



LANOL-TEX (22 index)

(24/case)

\$85.00/case

- The Frigid arterial fluid with the highest level of lanolin.
- Plus two modifiers to furnish pliable tissue for a body of medium firmness.
- Ideal where the soft, smooth skin texture supplied by lanolin is desired.
- Superb for dry, emaciated cases needing protection against dehydration.



TISSUE GUARD 32 (32 index)

(24/case)

\$108.00/case

- For use in place of "36 Plus" where the prep room is attached to a septic system.
- Armed with a particularly effective wetting agent that assures thorough distribution and deep penetration of body tissues for lasting preservation.
- Incorporates a special blend of humectant and dye to give a warm, even cosmetic effect, not the harsh effect sometimes obtained from unmodified dyes.
- Results in a firm body that retains some flexibility and natural feel.



EOTONE (27 index)

(24/case)

\$85.00/case

- Mid-to-high range index for when slightly more firmness is desired.
- Contains buffers and humectants to modify the formaldehyde level.
- Results in a pleasant even, light pink skin tone coloration.



STANDARD (32 index)

(24/case)

\$85.00/case

- Recommended for the most difficult cases.
- It also is a solid, higher index fluid for normal cases.
- Formulated and buffered to control dehydration.
- Contains special salts that enhance the action of its preservative results.
- Suited for "hypo-injecting" areas of the body not receiving adequate distribution.



RIGID (35 index)

(24/case)

\$79.00/case

- Well suited where a firm, well-preserved body is desired.
- Includes a unique blend of buffers, humectants and plasticizers to modify the harshness of formaldehyde.
- Ideal for aggressive applications, especially advanced cancer (counteracts nitrogenous waste) and decomposition cases.
- The fluid of choice when there will be an extended period of time between death and final disposition.
- Can be added to an arterial solution to increase firmness.
- Frigid's Highest index arterial fluid.

Cavity Fluids



PREMIUM CAVITY (7 index)

(24/case)

\$108.00/case

- Low odor cavity fluid providing:
- Excellent deep penetration.
- Effective Preservation.
- Broad spectrum disinfection.
- Contains "Frigid Stop" to control tissue gas and vermin.
- Excellent disinfectant properties of glutaraldehyde.



CAVITY 55 (8 index)

(24/case)

\$98.00/case

- A low odor cavity fluid with especially good disinfection and deodorizing capability.
- Features four proven preservatives and disinfectants.
- Quickly penetrates to areas where putrefaction and odor production are taking place and stops them.



PHAROS (36 index)

(24/case)

\$98.00/case

- Pharos cavity fluid is our highest index fluid.
- Provides rapid set-up and is extremely effective on posted cases.
- Formulated with additional organic germicides.
- Used by emblamers who prefer the exceptional tissue firmness provided by the high formaldehyde content.

Cavity Fluids



DRY GUARD (21 index)

(24/case)

\$85.00/case

- Quick action with excellent penetration and preservation resulting in tissue that is very firm and dry.
- As a surface pack, helps to firm and preserve areas of skin slip and spongy tissue.
- When used externally or just under the skin, it will help to bleach darkened areas and reduce swollen areas.



CAVITY KING (25 index)

(24/case)

\$85.00/case

- Quick action with excellent penetration and dispersion for maximum protection, especially when arterial embalming is difficult.
- At 25 index this cavity fluid furnishes excellent preservative power to protect against visceral putrefaction and odor development.
- Highly recommended when circulation is destroyed:
- Cancer, gangrenous, and ulcerated tissue.
- Other disease damage.
- Crushed or mutilated bodies.
- Especially applicable for treating infant cases where arterial embalming is difficult to accomplish.



SKIN TONE
ENHANCER

ROSE COLORTONE DYE

(16 oz bottle)

\$8.00 each

- Non-formaldehyde, concentrated dye.
- Compatible with all arterial and supplemental fluids.
- Produces a natural, long-lasting, life-like color and cosmetic effect.

Pre & Co-Injection Fluids



COLOR GUARD 1 JAUNDICE FLUID

(24/case)

\$6.00 each

- Intended for use with a low to moderate index arterial fluid and cool water.
- It chemically reacts with bilirubin to change its yellow coloration to a red or rosy tone.
- The yellow of jaundice can be significantly reduced, especially in visible body areas.
- However, in cases of "black" or "green" jaundice, where the bilirubin/biliverdin has diffused into the tissue, Color Guard 1 may be ineffective.
- Color Guard 1 does not contain preservative properties.

FOR JAUNDICE
TREATMENT



PREMIUM JAUNDICE

(24/case)

\$98.00/case

- Includes multiple agents to promote distribution throughout the body for effective flushing and bleaching of bilirubin, the pigment responsible for the yellowing tissue.
- Contains a low level of formaldehyde (8 index) so that large volumes of diluted fluid can effectively be used to flush the body.
- Counters the effect of formaldehyde on bilirubin, which many embalmers feel is the cause of "green" bodies that sometimes develop after embalming
- Even when large volumes of diluted fluid are injected, waterlogging is not a problem because of the moisture balancing chemicals formulated into Premium Jaundice.



FOR EXCESS
MOISTURE

LEAK GUARD

(24/case)

\$134.00/case

- Specifically designed to prevent leakage of body fluids and to pull excessive moisture from the body through the combination of:
 - An effective pore closer
 - A proven moisture reducer
 - A tissue hardener
- To assist the preservation of the body, a powerful, nonformaldehyde disinfectant (glutaraldehyde) is included so that Leak Guard can be injected directly into tissue or used in conjunction with an arterial fluid.
- Especially applicable with badly bloated or water-logged bodies.

Pre & Co-Injection Fluids



MOISTURE
RETENTION/
ANTI-DEHYDRATION

TISSUE AID

(24/case)

\$98.00/case

- Formulated with natural colloids that are particularly effective moisture retainers.
- We highly recommended Tissue Aid for:
 - Emaciated and dry skin cases.
 - When moisture loss from the body needs to be delayed.
 - Filling out tissue sunken by dehydration.
 - Embalming under very low humidity conditions.
- Tissue Aid restores the cells to proper level of hydration resulting in:
 - Recovery of a more natural appearance and form.
 - Skin that regains a soft, smooth texture.
 - A more natural, pliable, life-like feel to the body.



HUMECTANT

(12/case)

\$69.00/case

- Co-injection for cases showing signs of dehydration.
- An emulsion of several special oils and moisturizing agents helps to return sallow tissue to a life-like appearance with excellent cosmetic skin texture and body pliability.
- Wrinkling is controlled and a proper moisture level is restored.
- The moisture loving ingredients of humectants work to prevent further dehydration by delaying the escape of water from surface tissues and restoring the moisture level in deeper tissues.
- In addition to its ability to rehydrate tissue, Humectant modifies the harsh action of formaldehyde and softens the color of the dyes used in arterial fluids.

Pre & Co-Injection Fluids



SOLVOL (6 Index)

(24/case)
PRE-INJECTION
\$79.00/case

CIRCULATORY FLUSH
/ANTI-CLOTTING

- As a pre-injection it is excellent for a mild fluid flushing of the arterial and capillary system to allow better distribution and penetration of an arterial fluid.
- Useful as a bleaching agent, it penetrates readily into affected tissues to reduce and flush out objectionable discoloration.
- Special ingredients help prevent water-logging by promoting good drainage.
- Superior fluid for embalming infants: its low formaldehyde content, modifiers and mild formulation provide adequate preservative without harming delicate tissues.



PLASMA FLO

(12/case)
PRE-INJECTION
\$69.00/case

- For embalming bodies when congealed and clotted blood is anticipated. Clears and prepares the vascular system for optimum fluid distribution and penetration.
- Its special alkaline formula loosens and breaks up coagulated blood so that drainage can be established even in difficult cases such as burned or frozen bodies, or when extensive chemotherapy has taken place.
- As a co-injection fluid, Plasma Flo can be used with all aldehyde type aterials to enhance drainage, distribution, and penetration with a milder action by the aterial fluid.



FREE FLO

(12/case)
PRE-INJECTION
\$69.00/case

- Improves distribution and drainage by freeing capillaries of congealing blood.
- Used with an arterial fluid, it markedly improves the ability of the diluted fluid to displace the blood and allow the preservatives to do their work.
- Enhanced distribution of the arterial fluid into all areas of the body results in a uniformly embalmed body with even dye coloration on the surface of the body.
- Mildly alkaline, Free Flo buffers the arterial to an effective pH to prevent grey bodies.
- Special additives act to soften the potentially harsh effects of formaldehyde apparent in some arterials by retaining proper moisture thus giving the body a more natural feel.

Pre & Co-Injection Fluids



WATER
QUALITY

WATER/CLOT GUARD

(24/case)

\$85.00/case

- For outstanding control of hard water salts, which are frequently the cause of a blotchy appearance and fading color.
- Hard water salts work against the embalmer and the arterial fluids by:
 - Reacting with some of the dyes to reduce or eliminate their color.
 - Reacting with anionic surfactants to negate their distribution and penetration ability.
- Because calcium ions are required to clot blood, Water/Clot Guard neutralizes calcium salts to prevent further clotting and to assist the break up of clots and congealed blood.



TISSUE GAS/VERMIN
INFESTATION

STOP

(16 oz bottle)

\$12.00 each

- STOP is the chemical of choice for controlling the sources of tissue gas.
- Two powerful disinfectants penetrate deeply and rapidly to the source of tissue gas.
- On contact, a small amount of STOP destroys anaerobic bacteria and kills all maggots or insects which may have infested the remains, eliminating vermin-caused embarrassment.
- A special additive provides lubrication so tissue does not dry out or become brittle.



FORMALDEHYDE
NEUTRALIZER

SPILL GUARD

(1 gallon/3.79 liter bottle)

\$33.00 each

- Developed for spills of arterial and cavity fluids.
- Immediately neutralizes formaldehyde and glutaraldehyde so no harmful vapors can be produced.
- Spills can be flushed away or soaked up depending on local regulations.
- Contains no regulated chemicals and is not designed to neutralize phenols or chlorinated hydrocarbons.
- Highly recommended to have available in all prep rooms.

Supplementals



DISINFECTANTS &
DEODORIZERS

ORIFICE GUARD

(16 oz/473 ml bottle)

\$8.00 each

- An effective disinfectant for pre-embalming treatment of the eyes, mouth, nose, and other parts of the body where surface disinfection may be necessary.
- Contains a generous amount of isopropyl alcohol, as well as additional disinfectants, for broader germicidal coverage.



X-O ODOR NEUTRALIZER (All-Natural)

(16 oz/453 ml)

\$16.00 each

- An all-natural odor neutralizer, X-O is safer than chemical alternatives.
- While some products mask unpleasant odors, X-O eliminates odors permanently.
- Spray into the air or directly onto a surface to obtain an odorless environment.



MOISTURE
RETENTION

VELVA CREAM WITH ANTISEPTIC

(16 oz/453 ml)

\$18.00 each

- Used externally to retain moisture in the skin, giving it a smooth, velvety texture, and to eliminate wrinkles.
- Velva Cream can also be employed with cotton when forming mouth features to prevent dehydration of the lips and on the surface of eye caps to retain moisture in the eyelids.



LANOL CARE

(5.5 oz/163 ml)

\$11.00 each

- Lanolin-based spray that helps keep tissue moisturized and life-like.
- Provides an excellent base for the application of cosmetics.
- Ensures powder will never cake or crack on the skin, or look pasty.
- Results in skin with a smooth, natural look.

Supplementals



FRIGID STA-SEAL

(9.2 oz/272 ml bottle)

\$11.00 each

- Seals incisions to prevent seepage.
- Sets instantly and shapes itself.
- Adheres flawlessly and dries quickly.



SEALANTS

SKIN SEAL

(8 oz/237 ml jar)

\$23.00 each

- Liquid sealant used to cover sutured or glued incisions.
- May be applied as a base for cosmetic application where tissue is compromised or weeping.
- Excellent for sealing cuts where hair is present.
- Clear drying.



ARON ALPHA

\$12.00 each set

(five 2 gram bottles)

- Effective way to seal lips, eyelids, small punctures, and incisions.
- A high-strength, instant adhesive that dries clear and colorless in less than 45 seconds.

Supplementals

EXTERNAL/SURFACE TREATMENTS



SAFE POWDER

(25 lb/11.3 kg pail)

\$208.00/25lb. drum

- The Economical choice for external embalming.
- Can be applied over gangrene, cancer sores, mutilation, etc.
- For autopsy cases apply a pound or more of Safe to the cavity walls and among viscera.



CONTACT EMBALMING SPRAY

(16 oz/453 ml)

\$10.00 each

- One of the strongest embalming sprays available.
- Use on bedsores, gangrene, putrefactive areas, cancer, floaters and more to embalm and deodorize on contact.
- Trigger sprayer available upon request.



VIS-O-GUARD GEL (15 index)

(2 lb/.907 kg jar)

\$40.00 each

- Developed for cases requiring deep penetration and odor control.
- A surface embalming material of high viscosity designed to cling to tissue.
- Deodorizes and preserves putrid tissue as well as areas of the body that lack arterial distribution.
- Use to preserve the contents of viscera bags.



FORMALIN CREAM

(1 lb/.454 kg jar)

\$47.00 each

- A surface embalming cream that penetrates deep into tissue to preserve and disinfect.
- You control tissue hardness precisely by varying the quantity used and the period it is in contact with the body.
- Light pink color will not stain or bleach so you can apply to the face with confidence.

Supplementals

SOAPS & CLEANSERS



KREME PROTEC SOAP

(1 gal/3.78 L)

\$17.00 each

- Cleans, protects and deodorizes with the softness of lanolin.
- Use it on hands before and after embalming to help protect against infection and contagion.
- Applicable for bathing bodies and to shampoo hair, wash tables and instruments, etc.
- Available in Cherry or Lemon scents



WAVICIDE-01

(1 gal/3.78 L)

\$29.00 each

- Fast acting, 30-day thorough working glutaraldehyde solution.
- Sporicidal, virucidal, bactericidal, tuberculocidal, pseudomonacidal and fungicidal.
- Effective against HIV (AIDS).
- Has a mild, fresh scent.
- Recommended for disinfecting embalming instruments and tools.
- It is 2.5% aqueous glutaraldehyde sterilant/disinfectant, pH 6.3 to 6.4.



MAXIMA

(1 gal/3.78 L)

\$47.00 each

- A germicidal detergent that disinfects and deodorizes.
- Formulated for institutional use, this product can be used to disinfect floors, walls, metal surfaces, medical devices and other nonporous surfaces.
- Effective in hard water up to 400 PPM.
- Maxima is effective against HIV (AIDS), and is staphocidal, pseudomonacidal, virucidal, fungicidal.
- Will neither leave a film nor dull floor finishes.

Supplementals

SOAPS & CLEANSERS



SCRUB FOAM

(11 oz/325 ml can)- \$6.00 each

- An antiseptic foamed alcohol that applies the protective properties of ethyl alcohol without drying out your hands.
- Mild on your hands, but powerful and effective against pathogenic microorganisms.

DISPENSER RACK - \$6.00 each



DRY HAIR CLEANER

\$20.00 each

- Developed to clean dirt, hair dye, cosmetics and tobacco stains from hair, mustaches, eyebrows, hair and fingers.
- Apply with cotton or small spray bottle for maximum cleaning effects and control.



LYSOL DISINFECTANT CLEANER

Cleans and deodorizes all bathroom surfaces

Kills harmful viruses and bacteria, including Salmonella, Staph, and MRSA

Ideal for hospitals and other professional and industrial spaces

Aerosol delivers foaming cleaner

Fresh, clean scent

EPA Registered Disinfectant

NSF Registered (Category Code C2)

4 Oz bottle - 12/case

\$67.00/case

Supplementals

TISSUE TREATMENT & FEATURE BUILDING



FEATURE BUILDER

(16 oz/473ml)

\$15.00 each

- Congeals rapidly to make tissue building quicker and easier.
- Expands more fully to eliminate uneven application problems.
- Especially useful for rebuilding damaged facial features.



FRIGID HARDENING COMPOUND

(25 lb/11.3 kg box)

\$64.00/25lb.

F-1-HARD50LBS (50 lb/22.7 kg box)

\$87.00/50lb.

- Three actions in one preparation: Absorption, hardening, and disinfection.
- Indispensable in cases where circulation has been totally destroyed.
- Apply directly to affected parts to remove odors caused by sores, cancer, gangrene, or abscesses.
- Add cold water to use as a bleaching paste to eliminate surface discoloration.

Supplementals

TISSUE TREATMENT & FEATURE BUILDING



PAULEX POWDER

(1 lb/454 g jar)

\$17.00/16 OZ.

(25 lb/11.3 kg)

\$192.00/25Lb.

- A fine powder containing paraformaldehyde.
- Use it to pack orifices, eliminate odors, or as a hardening compound.
- Also for cancer cases, edema, gangrene, infection, burning, drowning, and stillbirth.
- It is great for cremations, disinterment, autopsies and shipping.



FRIGID AUTOPSY COMPOUND

(25 lb/11.3 box)

\$64.00/25lbs.

(50 lb/22.7box)

\$87.00/50lbs.

- Absorbs excess water and firms tissue.
- Very quick acting.
- Preserving agents make it extremely effective in destroying pathogenic germs.
- Dustless, pleasant-smelling, and contains no wood products.

Prep Room Supplies



MULTI-CLOSURE BUTTONS

The clear choice! Use our Multi-Closure buttons to close openings caused by I.V. lines, hypodermic incisions, trocars, tracheotomies, and feeding tubes. Compatible with 2-prong trocar button applicator.

50 per box- \$20.00/BX



CALVARIUM CLAMPS

The Calvarium Clamps are assembled with a stainless steel 3/4 inch slotted/phillips combo screw and stainless steel brackets that are 5/8 inch x 9/16 inch. 20 per package

\$20.00/PK

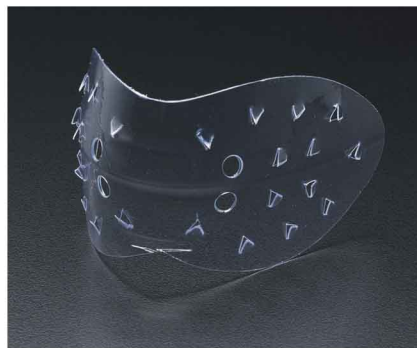


OCULIST EYE CAPS

Oculist eye caps will bond to the eye on contact with moisture. Perforated surface guarantees secure closure of the eyelids.

Small clear, gross- \$22.00/BX

Large clear, gross- \$22.00/BX



MOUTH FORMERS

Made of clear vinyl, Natural Expression Mouth Formers are ready for fast, easy installation.

No pre-shaping or pre-forming is necessary because their contoured design conforms closely to both natural and artificial outlines.

The closer fit provided by the bite-indentation guide assures closing of the lips and reduction of moisture loss.

Instructions for use included.

12 per box- \$20.00/BX



SNIP-TIP TROCAR BUTTONS

Snip-tip trocar buttons are flesh colored and compatible with 2-prong trocar button applicators.

\$19.00/BX

Prep Room Supplies



SOFT PREP BLOCK

Black rubber headrest that can be used as an arm or leg rest as well as a dressing block.

\$49.00 each



BODY WEDGES

Designed to be used as a set of 6 support under the legs, buttocks, back and arms, you never have to lift the body.

1 pair- \$82.00

CC10128-6 -Set of 6- \$246.00



DISPOSABLE FOAM HEADREST

Inexpensive disposable headrest. Perfect for AIDS, Hepatitis, and Herpes cases.

\$4.50 each

Bulk Pricing:

1 bag- \$3.50 each - 2 bags \$3.00 each

12 per bag

4 1/2" x 6 1/2" x 5"



BODY POSITIONER

Constructed of high impact plastic. 1/ea.
\$35.00 each

Prep Room Supplies



COTTON SUTURE THREAD

\$42.00/lb.

7 cord cotton, 1 lb., white.



WAXED LINEN SUTURE THREAD

\$40.00/lb.

6 cord waxed linen, 1 lb.



ROLL COTTON

One pound rolls 100% absorbent cotton.

1 lb. (.454 kg) roll

\$8.50/lb. roll



WEBRIL PREP TOWELS

Webril® Prep Towels are 100% non-woven cotton fabric.

One towel will absorb up to 10 times its own weight in liquid.

8" X 15"

\$20.00 each 50 sheet roll



DISPOSABLE PLASTIC COSMETIC BIB

22" X 20" 12/BX

\$13.50/BX



DISPOSABLE SHEETS

3 Ply Poly Coated Paper Sheets

50/Bx Disposable 40" x 90"

\$45.00/BX



DISPOSABLE PLASTIC PILLOWCASE

22" X 30" 12/BX

\$13.50/BX

COSMETICS

COVER-UP KIT

Generous Supply of six different shades of highly opaque masking cosmetics to permit perfect duplication of any skin shade.



COVER UP CREAM DARK KIT

Cover-up Kit- \$51.00 each

From left to right

- Peach
- Dark Lip
- Suntan
- Med Brown
- Black
- Dark Brown

COVER UP CREAM LIGHT KIT

Cover-up Kit- \$51.00 each

From left to right

- Flesh
- Natural
- Rachel
- Suntan
- Med Lip
- Brunette



GLOW TINT

Glow Tint makes your base and highlighting problems easy. It goes on evenly and becomes part of the skin. 16 oz. bottles.

#2- \$32.00 each

#6- \$32.00 each



PLASTO PACKING WAX

Plasto Wax is the only packing wax that returns to its original texture and firmness after heating. Plasto Wax Firm is a favorite among restoration professionals for rebuilding features damaged by disease and accident. Plasto Wax Soft can also be used to rebuild, but is more commonly used for covering discoloration and wounds.

Firm, 8 oz / 237 ml can

\$36.00 each

Soft, 8 oz / 237 ml can

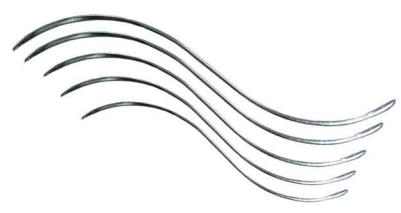
\$36.00 each

Instruments



RUBBER INJECTING TUBING

5/16" (7.94 mm), per foot
15 ft Roll
\$3.30 per foot



DOUBLE-CURVED NEEDLES- Sizes 1, 2 OR 3

\$20.00/PK



DISPOSABLE HYPODERMIC NEEDLES

Feature plastic components and are designed for disposal after single use. Male luer-lok style and will fit many types of syringes. 25/pk.
20 Gauge length: 1-1/2"
16 Gauge length: 1"
\$6.30/PK

PACKING FORCEPS

Curved. Crafted from surgical grade Stainless steel for years of dependability and performance. Designed with box-lock construction to eliminate screws for more durable, maintenance free products. Can be sterilized using heat or cold solution techniques.
Bite: 3-5/8"
Total Length: 10-1/4"
\$20.00 each



ANEURYSM NEEDLE

Standard eye. Useful in both blunt and detailed tissue dissection and resection as well as in separating/elevating arteries/veins for injection and drainage. Has standard eye located in the hook section for threading ligature under vessels. Meets surgical grade design standards. 6-3/4" total length.
\$23.00 each



ANEURYSM HOOK

Sharp Point Aneurysm Hook.
Sharp point. Useful for detailed tissue dissection and resection as well as in separating/elevating arteries/veins for injection and drainage.
\$20.00 each



Instruments



INJECTOR NEEDLES

\$19.00/BX Gross/BX
needles for needle injector, stainless steel



SCALPEL HANDLES

#3 scalpel handle for blades
10-15- \$5.00 each
#4 scalpel handle for blades
20-25- \$5.00 each

SCALPEL BLADES

#11- \$35.00/BX
#22 - \$35.00/BX
#21- \$35.00/BX
100 per box



DISPOSABLE SCALPEL WITH ATTACHED BLADE #11 or #21

#11. Sterile. Surgical quality stainless steel. Individually wrapped. 10/pk.
#11- \$16.00/PK
#21- \$13.00/BX



DISPOSABLE SYRINGE: 30CC

Plastic. Female luer-lok. Calibrated in cubic centimeters (cc) or milliliters (ml). 10/pk.
\$6.00/PK

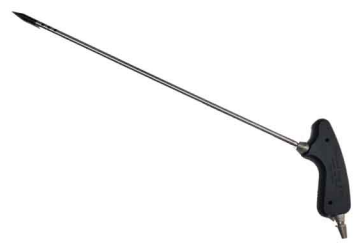


TROCAR POINTS

3/8" & 5/16" Standard Trocar Points
\$18.00 each

Non-Stock Instruments

*Instrument
Design
&
Mfg. Co. LLC*



For more information on the items shown above or other options for tools and instruments, please visit Instrument Design & Mfg. Co. LLC's website: www.embalminginstrument.com; or call and request an instrument catalog & pricelist.

Protective Covers



BOUFFANT CAPS

Keep hair out of the way and free from grease, dust and dirt, with poly spun bouffant caps. Gentle elastic band. Latex free.

Material: Poly
Grade: Industrial
Blue
21"
100/BG
\$5.00/BG



SHOE COVERS

100% spun-bond polypropylene, with a rubberized tread for extra gripping power. Protects carpets and floors from outside dirt, and shoes from inside contaminants. Comfortable elastic openings. Universal size fits to men's size 10.

Extra Large fits men's size 11+.

Material: Poly
Grade: Industrial
Blue
Uni-size and XL
100/PK
\$15.00/PK



REUSABLE SURGICAL GOWNS

Blockade fabric is a taffeta weave produced with untwisted continuous filaments.

Constructed of 99% polyester with 1% carbon.

The fabric provides an exceptional barrier that is highly fluid-resistant while maintaining breathability and comfort.

Under recommended processing conditions, Blockade's barrier properties are shown to last through 75 processings.

2-ply Blockade fabric for the front panel and 3/4 of the sleeves, and 1-ply Blockade for the back. Military collar

Large
\$30.00 each

Protective Covers



DISPOSABLE PROTECTIVE GOWNS

Offers excellent fluid protection for worry-free job performance

Made from blue polyethylene-coated polypropylene material

Generously sized for full coverage and flexibility

Designed with classic neck and waist ties

Available with elastic wrists or knit cuffs

Material passes ASTM F1670 test method

Blue

XL - \$22.00/bg

2XL - \$22.00/bg

10 per bag



CONE MASKS

- N95 approved particulate respirator meets NIOSH and CDC guidelines for TB exposure.

- Micro filter medium protects against micron-size particles. Latex free.

- Double band holds mask firmly in place for maximum protection.

- All respirators must be selected, fitted and maintained in accordance with OSHA and other applicable regulations.

- Available in large/medium and small.

\$16.00/BX 20 masks/box



DISPOSABLE POLY APRONS

Economical and disposable poly aprons.

Low density polyethylene loop slips over head and back self-tie easily detaches.

1.75 mil thick.

25" x 40".

\$30.00/BX

50 per box



EAR LOOP FACE MASK

These 100% polypropylene, 3-ply fluid resistant face masks are fiberglass free and designed to eliminate fogging. They offer high bacteria filtration, with efficiency at 3.0 microns. Aluminum nose guard for extra comfort.

Filters out most airborne germs, particulates and pollen. Expandable Fold Design Comfortable round elastic over-the-ear design for easy donning and removal.

\$5.50/BX

50 masks/box

Plastic Garments



PANTS

Clear
MEDIUM- \$6.25 each
LARGE- \$6.25 each
X-LARGE- \$6.25 each
2X- \$10.25 each
3X- \$12.25 each



SLEEVES

Clear
ONE SIZE
12 pr/BX
\$5.25 each



COVERALLS

Clear
MEDIUM- \$8.25 each
LARGE- \$8.25 each
X-LARGE- \$8.25 each
2X- \$11.25 each



UNIONALLS

Clear
SMALL- \$15.25
MEDIUM- \$15.25 each
LARGE- \$17.25 each
X-LARGE- \$17.25 each
2X- \$19.25 each
3X- \$21.25 each
4X- \$29.25 each
Infant Size- \$16.00 each



CAPRI PANTS

Clear
SMALL- \$12.25 each
MEDIUM- \$12.25 each
LARGE- \$12.25 each
X-LARGE- \$12.25 each



STOCKINGS

Clear
MEDIUM- \$7.25 each
LARGE- \$7.25 each
X-LARGE- \$7.25 each

*Price break for case purchases.

Gloves



MICROFLEX SAFE GRIP GLOVES

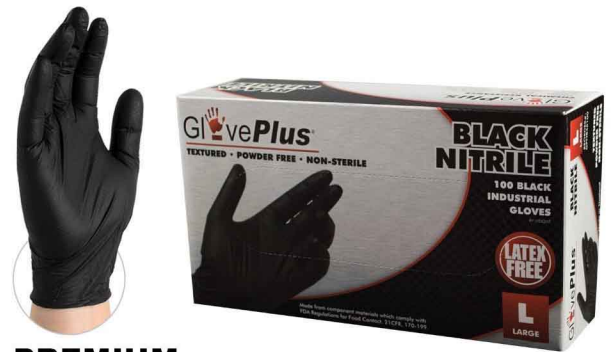
One of the most popular gloves used by embalmers, Microflex Safegrip gloves are designed for increased protection in hazardous environments. They offer very good tactile sensitivity at the fingertips, long cuffs to protect wrist and forearms, and are powder-free and ambidextrous.

50 count box- \$19.00/BX

50 count box- \$19.00/BX

50 count box- \$19.00/BX

Bulk Pricing: \$10 off each case purchased.



PREMIUM

GP BLACK NITRILE GLOVES

5-6 mils thick

- Industrial Grade
- Black
- Powder Free
- Textured/
Micro-roughened
- Polymer Coated
- Latex Free

L 100 count box- \$11.00/BX

XL 100 count box- \$11.00/BX

Bulk Pricing: \$10 off each case purchased.

Gloves



PREMIUM HD

GW HD LATEX INDUSTRIAL GLOVES

8 mils thick

- Industrial Grade
- Ivory
- Powder Free
- Textured
- Double Chlorinated

Gloves with a beaded cuff.

M 100 count box - \$13.50/BX

L 100 count box - \$13.50/BX

XL 100 count box - \$13.50/BX

Bulk Pricing: \$10 off each case purchased.



PREMIUM HD

GP HD BLUE LATEX EXAM GLOVES

13 mils thick

- Exam Grade
- Blue
- Powder Free
- Textured
- Chlorinated

Gloves with a beaded cuff.

M 50 count box - \$15.00/BX

L 50 count box - \$15.00/BX

XL 50 count box - \$15.00/BX

Bulk Pricing: \$10 off each case purchased.

Gloves



PALLBEARER GLOVES

White. Heavy nylon stretch glove fits like a second skin. No snap. Decoratively trimmed with ribbed back design. Thumb is set-in. Machine stitched cuffs. One size fits most.
12/BG
\$38.00/BG



PALLBEARER GLOVES WITH SNAP CLOSURE

White Nylon w/Snap
Full Fashion w/Snap and Ribbed Back.
12/pk
\$36.00/pk

Body Bags



BLACK DISASTER BODY BAG

\$39.00 each - **CLOSEOUT ITEM \$2.00 OFF EACH**

36X90X20M

SUITABLE FOR CREMATION

Bulk Pricing: \$5 off each when you purchase 5 or more.



BLACK HEAVY DUTY BODY BAG-8 BUILT IN HANDLES

\$39.00 each

38X94X20M PVC BLK

NOT SUITABLE for CREMATION

Bulk Pricing: \$5 off each when you purchase 5 or more.



WHITE BODY BAG

NOT SUITABLE FOR CREMATION

\$15.00 each

36X94X8M PVC WHITE

SUITABLE FOR CREMATION

\$17.00 each

36X90X8M

Bulk Pricing: \$2.00 off each when you purchase 5 or more.

I.D. Tags



ANKLE I.D. TAGS

\$105.00/box

12" write on snap closure

Information Area: 3 1/2" L x 1" H

Lines of Info: 5

500/ box

NAME OF DECEASED				CASE NO. _____	
AGE	SEX	RACE	WEIGHT	HEIGHT	
PLACE OF DEATH			DATE OF DEATH		
CAUSE OF DEATH					
PHYSICIAN					
FUNERAL DIRECTOR					
COMMENTS					

BODY IDENTIFICATION TAGS

\$25.00/pk

Coroner Body ID tags with String

2.625' x 5.25'

Includes tie. 100/pk

Air & Combination Trays/ Body Transfer Cases



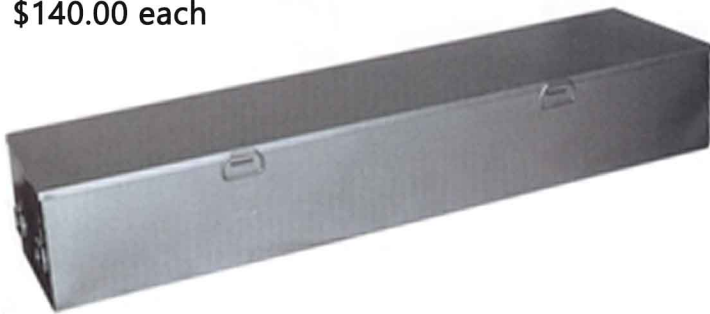
ADULT AIR TRAY

\$90.00 each or
 Buy 4-9: \$80 each (\$10 off each)
 Buy 10 +: \$75.00 each (\$15 off each)
 Mix and Match
 Inside: 84"L x 29"W x 23"H
 Outside: 87¼"L x 32"W x 25"H

CHILD AIR TRAYS *for Cherokee Caskets*

\$74.00 each

Oversized Air tray:
 Outside: 92" x 36" x 25" 50 lbs.
 Inside: 88" x 34" x 24½"
 \$140.00 each



BODY TRANSFER CASE

No latches #100 Square
 76½" x 21¼" x 12"
 65 lbs.
 \$475.00

Oversized Case #100 Square (24"):
 76½" x 24" x 13"
 78 lbs.
 \$595.00

Oversized #100 Square (27"):
 78" x 27" x 14"
 100 lbs.
 \$999.00

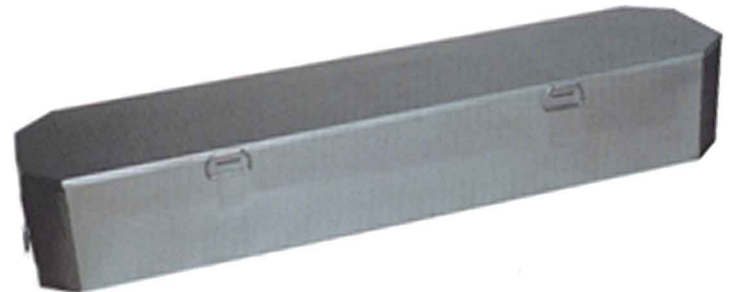
*CALL FOR AVAILABILITY



COMBO TRAY

\$104.00 each or
 Buy 4-9: \$94.00 each (\$10 off each)
 Buy 10 +: \$89.00 each (\$15 off each)
 Mix and Match
 Inside: 80"L x 21"W x 13"H
 Outside: 84"L x 24"W x 15"H

Oversized Combo Tray:
 Outside: 86" x 30" x 17" 80 lbs.
 Inside: 83½" x 27½" x 16¼"
 \$165.00



OCTAGON BODY TRANSFER CASE

No latches
 73¾" X 17" X 12"
 65 lbs.
 \$475.00

SQUARE CHILD CASE

No latches
 59¾" Handle to Handle
 15" Top Width
 13" Bottom Width
 9" Depth
 40 lbs. \$450

*CALL FOR AVAILABILITY

Vaults & Liners



POLY-VAULT

\$475 each

INSIDE: 84" X 29 3/4"

OUTSIDE: 94" X 36 1/2"

WEIGHT: 135 LBS

Poly-Vaults Also Available in
Youth Size

(See Child Catalog Volume 10)



POLY-LINER

\$325 each

INSIDE: 85 1/2" X 28 1/2"

OUTSIDE: 94" X 35 1/2"

WEIGHT: 90LBS.

VANTAGE VAULT OVERSIZE

\$600 each

INSIDE: 92.5" X 38.5" X 28"

OUTSIDE: 101" X 46" X 34.5"

WEIGHT: 327LBS.

*Handles not included



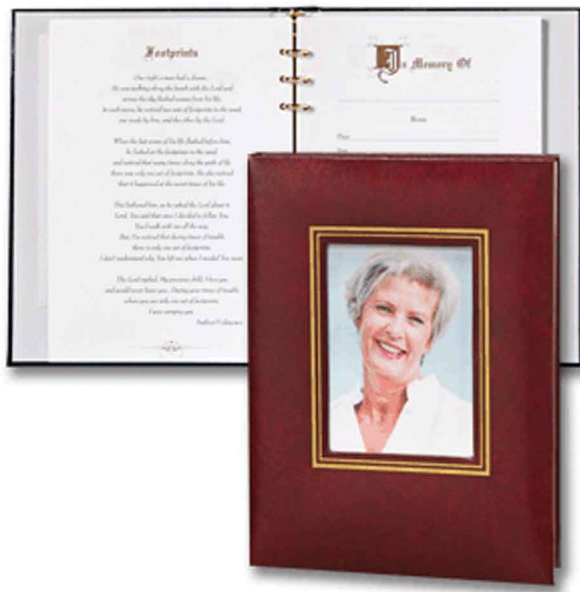
Funeral Service: Register Book Box Sets



DESIGNER WHEAT BOX SET
\$58.69/box set



WARM MEMORIES BOX SET
\$62.69/box set



RECTANGLE FRAME BURGUNDY BOX SET
\$65.69/box set



PRAYING HANDS BOX SET
\$58.69/box set

EACH REGAL LINE GIFT BOX CONTAINS:

- 1 REGISTER BOOK
- 50 ACKNOWLEDGEMENT CARDS WITH ENVELOPES
- 100 SERVICE RECORDS
- 1 FLOWER CARD ENVELOPE
- 1 GOLD OVERLAY PIN
- 1 BOOKMARK WITH LAMINATING POUCH
- 1 THINGS TO REMEMBER BOOK

Funeral Service: Register Book Box Sets



PATRIOTIC BOX SET

\$56.69/box set



WINGS OF HOPE BOX SET

\$58.69/box set



FARM HARVEST BOX SET

\$65.69/box set



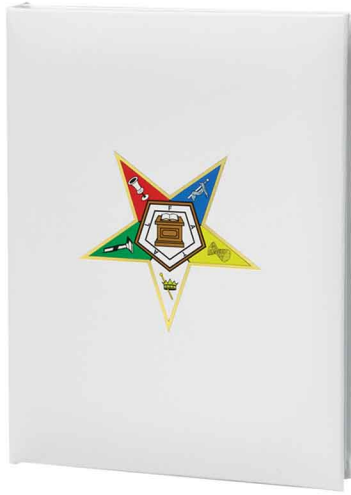
ROYAL SERIES NAVY BOX SET

\$58.69/box set

EACH REGAL LINE GIFT BOX CONTAINS:

- 1 REGISTER BOOK
- 50 ACKNOWLEDGEMENT CARDS WITH ENVELOPES
- 100 SERVICE RECORDS
- 1 FLOWER CARD ENVELOPE
- 1 GOLD OVERLAY PIN
- 1 BOOKMARK WITH LAMINATING POUCH
- 1 THINGS TO REMEMBER BOOK

Funeral Service: Register Book Box Sets



EASTERN STAR BOX SET

\$58.69/box set



MASONIC BOX SET

\$58.69/box set



FOREST RETREAT BOX SET

\$58.69/box set



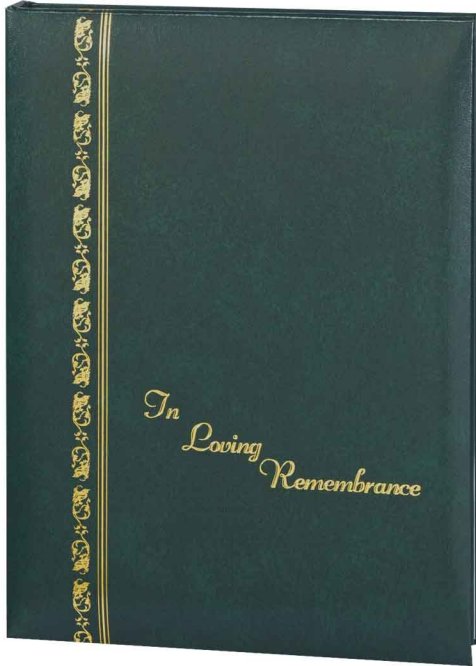
AUTUMN STREAM BOX SET

\$58.69/box set

EACH REGAL LINE GIFT BOX CONTAINS:

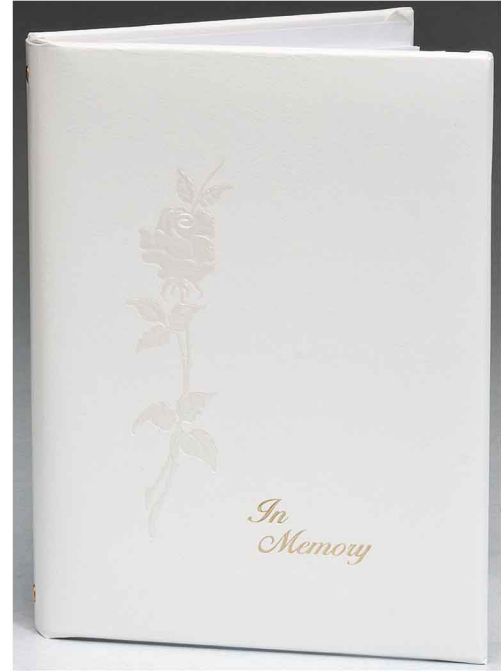
- 1 REGISTER BOOK
- 50 ACKNOWLEDGEMENT CARDS WITH ENVELOPES
- 100 SERVICE RECORDS
- 1 FLOWER CARD ENVELOPE
- 1 GOLD OVERLAY PIN
- 1 BOOKMARK WITH LAMINATING POUCH
- 1 THINGS TO REMEMBER BOOK

Funeral Service: Register Books



ROYAL SERIES REGISTER BOOK

\$18.50 each
Green - 6 Ring



PEARLIZED REGISTER BOOK

\$24.00 each
6- Ring
7-1/2"x 10". 1/ea

Royal Series Also Available in:



White

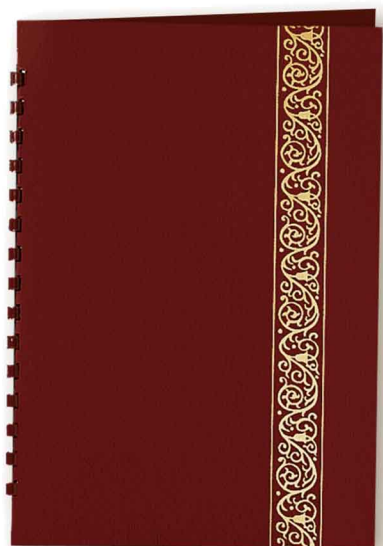


Navy Blue



Black

Funeral Service: Register Books

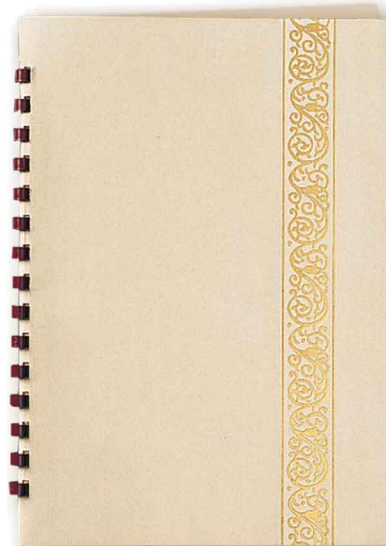


CLASSIC SCROLL LEATHERETTE REGISTER BOOK-BURGUNDY

\$8.50 each

15-Ring

7-1/4" x 10-3/8". 1/ea

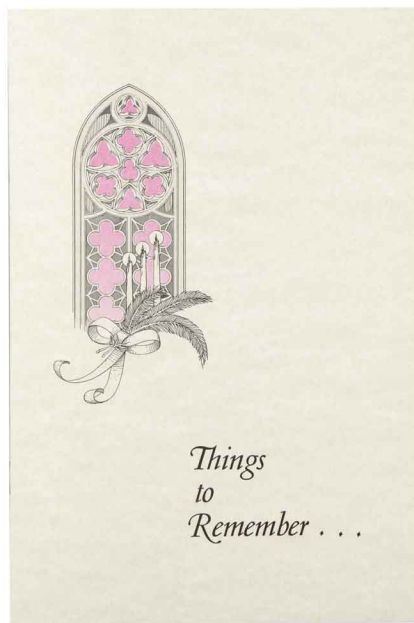


CLASSIC SCROLL LEATHERETTE REGISTER BOOK- IVORY

\$8.50 each

15-Ring

7-1/4" x 10-3/8". 1/ea



FOOD BOOK-THINGS TO REMEMBER

\$3.40 each

Funeral Service: Register Book Accessories



LOVELY CARD POEM THANK YOU CARD

\$0.18 per sheet
 "Thank You" in Raised Gold Ink
 Folds to 3-3/8" x 4-7/8"
 White envelope
 Verse: Lovely Card Poem
 *SEE POEM BELOW

BLANK THANK YOU CARDS

\$0.18 per sheet

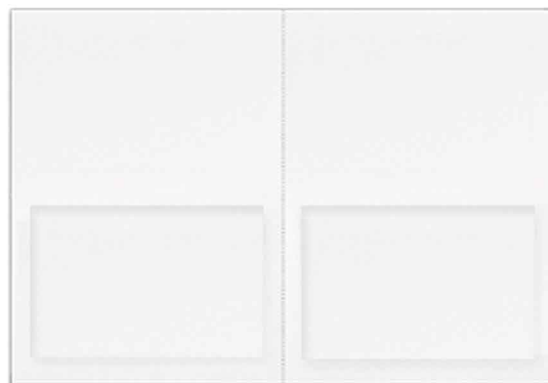


BLANK PRAYER CARDS

\$0.07 each
 Blank Prayer Cards for personal data
 Lamination pouch sold separately
 4-up perforated
 8-1/2 x 11 sheets for use in laser printers
 Verse: Blank

LOVELY CARD POEM

Perhaps you sent a lovely card or sat quietly in a chair.
 Perhaps you sent a floral piece, If so, we saw it there.
 Perhaps you spoke the kindest words
 As any friends could say,
 Perhaps you were not there at all,
 Just thought of us this day.
 Whatever you did to console our hearts,
 We thank you so much, whatever the part.
 The family of



BLANK ACKNOWLEDGEMENT

\$0.18 per sheet
 Paneled Acknowledgment Card
 Blank Stock
 2-Up Microperforated
 White Envelope | 4-7/8" x 3-3/8"
 Verse: Blank
 *Also available in Ivory

Funeral Service: Flag Cases

The Veteran flag case with glass front and removable back panel with turn-button closures. Holds the standard 5' x 9.5' Burial Flag. Wall mountable. Made of Solid American Hardwood using our exclusive Cherry Finish. Made in America



VETERAN-GUNMETAL

\$60.00 each
25 3/8" L x 12 1/2" H x 3 1/4" D

VETERAN-VINTAGE OAK

\$60.00 each
25 3/8" L x 12 1/2" H x 3 1/4" D

VETERAN-CHERRY

\$60.00 each
25 3/8" L x 12 1/2" H x 3 1/4" D

Funeral Service: Hearse Magnets

FOR USE ON METAL DOORS OR CASKETS



12" MARINE CAR
MAGNET
\$24.50
(2 for \$45.00)



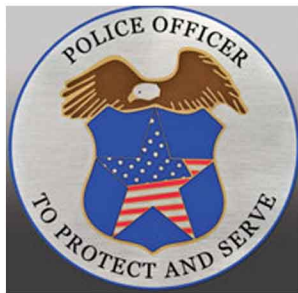
12" FIREFIGHTER CAR
MAGNET
\$24.50
(2 for \$45.00)



12" NAVY CAR
MAGNET
\$24.50
(2 for \$45.00)



12" ARMY CAR
MAGNET
\$24.50
(2 for \$45.00)



12" POLICE CAR
MAGNET
\$24.50
(2 for \$45.00)



12" COAST GUARD
CAR MAGNET
\$24.50
(2 for \$45.00)



12" GREAT SEAL OF
AMERICA
CAR MAGNET
\$24.50
(2 for \$45.00)



12" NATIONAL GUARD
CAR MAGNET
\$24.50
(2 for \$45.00)



12" AIRFORCE CAR
MAGNET
\$24.50
(2 for \$45.00)

Funeral Service: Hearse Magnets

FOR USE ON METAL DOORS OR CASKETS



11 1/2" NAVY CAR
MAGNET
\$20.00
(2 for \$35.00)



11 1/2" MARINES CAR
MAGNET
\$20.00
(2 for \$35.00)



11 1/2" COAST GUARD
CAR MAGNET
\$20.00
(2 for \$35.00)



11 1/2" ARMY CAR
MAGNET
\$20.00
(2 for \$35.00)



11 1/2" AIR FORCE
CAR MAGNET
\$20.00
(2 for \$35.00)



11 1/2" PRISONER OF WAR
MIA CAR MAGNET
\$20.00
(2 for \$35.00)



11 1/2" FIREFIGHTER
CAR MAGNET
\$20.00
(2 for \$35.00)

Funeral Home Equipment

MOBI CT100™ Church Trucks -

The MOBI Church Truck is constructed of anodized aluminum tubing, sturdy for moving and displaying any size casket, and has a load bearing of 1000 lbs. Convenient and easy to maneuver, the accordion x-design allows for four positions folded for easy transport to fully extended for supporting a casket, AND comes standard with lift assist handles.

Features:

Heavy Duty Aluminum Alloy Construction

1000+ lbs Weight Capacity

Removable Handles

Swivel wheels with brakes

Specifications

1st locking position : 27 × 29 (L × H)

2nd locking position: 51 × 26 (L × H)

3rd locking position: 62.5 × 22.5 (L × H)

Folding size (L × H) : 6.3 × 31.5 (L × H)

Bearing load: 1000 lbs

\$495.00

Limited Time - Free Storage Cover



Bronze



Silver



Crushed Velvet Black or Burgundy Church Truck Drapes

The Black Velvet MOBI Frameless Church Truck Drape is family to our premium crushed velvet series, offering a timeless elegance that is crafted for many years of use. We add an additional fluid resistant material under the top for extra protection from use. The reinforced grommets hold the drape securely in place, fits snug so the drape shows with consistency, while also preventing the wheels from "catching" the fabric with our integrated liner backing throughout the drape.

Premium Material, Durable & Designed to Last

8 Reinforced Grommets

12 Pleat Design, Classy Crushed Velvet

Double Layered Inset Fluid Resistant material under top

Heavy gauge backing for long wear and tear

\$230.00



Funeral Home Equipment



MOBI F500™ MULTI-LEVEL FUNERAL | MORTUARY STRETCHER

Our MOBI F500™ is built with the quality and durability industry professionals require. We understand that having equipment you can count on is paramount in your day to day operations. Our MOBI brand mortuary stretcher is backed by our ONE YEAR manufacturer's warranty.

The height can easily be adjusted with the height handles located at both ends. The stretcher is designed for the Funeral and Body Removal industries and can be operated and used by one person when retrieving, loading, and transporting.

The MOBI F500™ stretcher is a durable gurney, lightweight and built with high strength aluminum alloy materials with a weight capacity up to 600 lbs, equipped standard with a black pad, durable securement straps and security wheel locks.

Features:

- One person can operate
- Automatic loading
- Multiple height levels (Both ends)
- Wheel locks & durable tie straps
- One year warranty
- FDA, CE and ISO 9001 Certificate

Includes:

- MOBI F500
- PRODUCT MANUAL
- FREE COT COVER
- DURABLE 60" STRAPS (2)
- BLACK MATTRESS PAD (2")

Technical Features:

- Capacity load rating: 600 Lbs
- Length: 77"
- Vehicle Loading Height: 25"
- Max Height: 32"
- Min Height: 14"
- Wheel Diameter: 5"

Packaging:

- Packing Size: (77"x 24.5" x 15")
- Gross Packaging Weight: 92 lbs
- \$895 + Shipping**

Comparable To:

Ferno Standard Size Cot
Junkin Standard Size Cot

Funeral Home Equipment

MOBI F500-T™ HIGH LOADING FUNERAL | MORTUARY STRETCHER

Our MOBI F500-T™ is built with the rigidity industry professionals demand and is equipped to handle full-size vehicles such as suburban's, Explorer's, Yukon's, Escalades, Econoline type vans and others. Our MOBI brand mortuary stretchers are backed by our ONE YEAR manufactures warranty.

The height can easily be adjusted at both ends and has additional elevation at the load end to accommodate 32 inches. The stretcher is designed for Funeral and Body Removal first call services and can be operated and used by one person when retrieving, loading, and transporting.

The MOBI F500-T™ stretcher is durable, lightweight and built with high strength aluminum alloy and stainless steel materials. This cot includes a weight capacity up to 600 lbs, comes equipped with a black mattress pad, 2 durable buckle straps, cot cover and wheel locks.

Features:

- Designed for High Loading and Full Size Vehicles
- Stainless Steel Legs For Added Strength
- One person automatic loading cot
- Multiple height levels (Both Ends)
- Wheel locks & durable tie straps
- Burgundy Cot Cover
- (2) Buckle Straps (60")
- Capacity Rating 600 lbs.
- Backed by a One Year Warranty

Comparable To:
Ferno
Junkin

Includes:

- MOBI F500-T
- PRODUCT MANUAL
- FREE COT COVER
- DURABLE STRAPS (2)
- BLACK MATTRESS PAD (2")

Technical Features:

- Product Size (L x W): 76.75" x 22.0"
- High Position: 76.75" x 22.0" x 32.0"
- Low Position: 76.75" x 22.0" x 11.8"
- Vehicle Loading Height: 32"
- Deck Height: 31"
- Net Weight: 63.9 lbs.
- Gross Weight: 77.1 lbs.
- Wheel Diameter: 5"
- Capacity rating: 600 lbs
- \$1295.00



Funeral Home Equipment

HD STAINLESS FOLDING DRESSING / EMBALMING TABLE HD MOBI-SS-FET -OS

Heavy Duty 304 Stainless Steel Construction

MADE IN USA

1000 lb Weight Capacity, Ideal as a Dressing Table or Embalming

Heavy Gauge Stainless Steel Leg Tubing

6" Locking Swivel Castors

Drain Located in Center of Foot End

Legs Can Fold For Easy Storage

Built at our facility, this table is made from heavy gauge 304 stainless steel to handle higher weight capacities than traditional folding tables. Ideal for dressing, or can be used as an embalming table. Has a drain hole at foot end of table. Can customize as needed.

Length: 80"

Width: 30"

Height: 38.5"

Weight: 103 lbs

Load Capacity: 1000 lbs \$1475.00



MOBI OVERSIZED HYDRAULIC EMBALMING TABLE

High-Quality 14 gauge 304 Stainless Steel Top

3" Trough | 6" Drain Stem

Specially Designed Shape makes Fluids Drain Away From Body

Deepest trough In the industry that eliminates spillage

Dependable Hydraulic Pump System

Stain Resistant Plastic Base

Removable End Handles

1000 lbs. Weight Capacity

8" Castors That Lock Instantly w/ Foot Brake

MADE IN USA

Specifications:

Max Height : 40"

Min Height: 27"

Load Capacity: 1,000 lbs

Stainless Steel Top 85 X 35 Inches

Trendelenburg: 0 - 10 Degrees

Reverse Trendelenburg: 0 - 10 Degrees

\$3,495.00



Funeral Home Equipment

MOBI FOLDING DRESSING TABLE

The folding dressing table is ideal for prep room use when you need a durable, sanitary surface that can be easily folded away and opened to use when needed. It is designed to open and fold easily, and with its four swivel castors with brakes, is easy to maneuver and secure in limited space.

Overview:

Sturdy laminated table top
Durable frame - easy to fold
Locks when folded for storage and maneuverability
2 handles for easy mobility and sanitation purposes
Card holder for body identification tags
Swivel wheels w/ foot locks

Technical:

Tabletop: 77" x 25" x 3/4" (L x W x H)
Overall: 77" x 25" x 34" (L x W x H)
With Handles: 92.5" x 25" x 3" (L x W x H)
Wheel Base: 23 x 10"
Folded: 59" x 25" x 13" (H x W x T)
Weight: 68 lbs.
Load Capacity: 500 lbs.
\$895.00



COT COVER

MOBI Medical cot covers are universal and made to fit standard sized mortuary stretchers. Made from a durable, stain resistant material along with waterproofed backing, this cover is easy to clean and maintain. There is a document pouch located at one end of the cover. This cot cover is available in 3 colors and we now offer optional professional embroidery services.

Stain Resistant Fabric
Bound Water Proofed Interior Fabric
Document Pouch with Sanitary Magnetic Clasp
Universal - Fits All Regular Sized Cots
Oversize: 77"L x 24"W
Regular: 77"L x 23"W
\$179.00



Funeral Home Equipment

CASKET JOCKEY- CJ-1

- The only way to take caskets from vertical to horizontal.....and back again.
- Makes loading taller vehicles easy work....even if you are doing it alone.
- Helps to reduce injuries resulting from casket falling.
- Allows less capable workers to do the work effectively.
- Rolls quietly and effortlessly on 5" casters.
- Built in Iowa...
 - to last—all welded construction
 - to look good...and powder coated to keep looking that way
 - to make your work less like work

58 lbs

22" wide x 36" long x 29" tall

\$495.00



Funeral Home Equipment

WAUK BOARD

The WauK® board is lighter and narrower than standard cots. With a 500-pound capacity, this lightweight 30-pound tool gives funeral directors and coroners a new way to remove the deceased with dignity and respect.

Instead of dragging the deceased to a cot, place a WauK® board directly next to the deceased and respectfully "log roll" them on to the WauK® board.

The process is easier on the funeral director's body and is more tactful in the presence of loved ones.

The WauK® board is the only removal device that allows either one or two people to lift and then roll a decedent during removal.

Quick disconnect handles make it easy to move the deceased into an upright position and maneuver around corners, down stairs, through tight spaces. Sturdy wheels smoothly handle deep pile carpet. And, an extra handle in the large footrest gives an assistant an easy way to help navigate down stairs, over bumps, and into the service vehicle.

Once in the service vehicle, WauK® board's handles function as a brake.

The entire board is impervious to bodily fluids and can easily be cleaned/decontaminated.

\$1,025.00

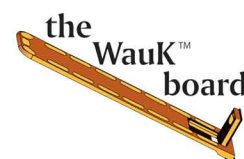


Attributes:

- Lightweight
- Capacity: 500 lb.
- Reinforced for extreme rigidity
- Impervious to body fluids
- Easily decontaminated
- Thick wheels roll over deep pile carpet
- Large footrest
- Convenient handle in footrest
- Easy storage in service vehicles

Dimensions:

- overall length 76.5"
- length from top of foot rest to head of board 71"
- width 17.5"
- thickness 2"
- thickness at wheels 3.5"



Funeral Home Equipment

LIGHTWEIGHT CASKET DISPLAY

CD-B6000- \$350.00

Show off the interior of both caskets with this casket display rack. Made of sturdy welded steel tubing. Knocks down easily for storage or shipment. Minimal assembly required.

Measurements: 34" W x 48" L x 54" H



CLEAR ACRYLIC CASKET DISPLAY SUPPORTS

CE-4950- \$150.00

Show off the appearance of your more elaborate casket on these handsome supports. Two or three units can hold the heaviest caskets. Made of heavy, breakproof acrylic lucite.

Grooved interlock goes together quickly, disassembles easily and stores flat to save space. Also available in semi-transparent bronze style see Item# CE 5950.

Sold per set (2 casket supports).

Measurement per panel: 22" x 22" x 1/4" thick



ROYAL CASKET BIER

SHC-1502- \$1798.00

Constructed in non-marring Walnut Formica.

Quiet, smooth 5" swivel casters with heavy metal corners.

Measurements: 21½" H x 65" L

Cherokee Services

CASKETS:

Interior Lining Replacement

Metal \$250 - Crepe

Metal \$300 - Velvet

Metal \$300 - Camo Interior

Hardwood \$250 - Crepe

Hardwood \$350 - Velvet

Hardwood \$375 - Camo Interior

*Lining Replacement is for
standard metal caskets
& some hardwoods



FUNERAL SERVICE EQUIPMENT:

Refurbish Register Stands

\$175 - Full Refurbish

Replace Register Stand Tops

\$70 - Replace Tops Only



BEFORE



AFTER



Company Policies

Return Policy: NO RETURN WITHOUT PRIOR AUTHORIZATION.

No returns after 30 days. Contact our office immediately with all defects, damages or shipping errors.

Stock Return Policy: Products must be returned in good, unused condition and in original packaging. Restock fee up to 20% will be charged and shipping /delivery cost are to be paid by the purchaser.

Non-Stock Return Policy: Must notify Cherokee within 7 days, so office can contact manufacturer immediately for return authorization approval.